

# E Series

## Features

### 3-Way and 4-Way Valves

#### Several Styles and Options

- 3-Way or 4-Way Configurations. 2-and 3-position configurations.

#### Numerous Actuator Styles

Manual	Mechanical	Electric	Pneumatic
Hand Lever	Cam Stem	Single Solenoid	Pilot
Palm Button	Roller Cam	Double Solenoid	Bleed
Pedal			
Treadle			

#### Many Performance Features

- Buna-N spool seals are standard. Viton seals are available for high temperature applications. Consult the factory for ordering information.
- The E Series Valve has a low profile. An extruded aluminum body provides excellent durability and lighter weight.
- An External Solenoid Supply Port allows service in low pressure applications. This requires a #116153 plug Kit. See Page 47 for operation and ordering information.

#### Solenoid Override

- Manual locking override is standard on solenoid models. Turn override to operate.
- Solenoid override is a convenient means to set-up and trouble shoot circuits. Air pressure at the solenoid exhaust will also override the solenoid.

#### Coils • Coils are cURus Listed.

## Performance Specifications

**Flow:** 26 SCFM

**Cv Factor:** .70 Cv

**Temperature Ratings:** -10° to 180° F (-23° to 82° C)

**Weight:** Solenoid Valves 1.8 to 3.4 oz. (.82 to 1.5 g)  
Non-Solenoid Valves .7 to 1.3 oz (.32 to .6 g)

**Lubrication:** Valves use O-ring seals. For maximum performance and life expectancy, standard air line lubrication should be used.

	Pressure Range PSI (Bar)	Minimum Pilot Pressure PSI (Bar)
<b>Manual Actuators</b>		
Manual, Spring, and Spring Centered Returns	20 -150 (1.4 - 10.2)	
<b>Mechanical Actuators</b>		
Manual, Spring, and Spring Centered Returns	20 -150 (1.4 - 10.2)	
<b>Electric Actuators</b>		
Spring Return	30-150 (2-10.2)	
Spring Centered Return	35-150 (2.4-10.2)	
Solenoid Return	20-150 (1.4-10.2)	
<b>Pneumatic Actuators</b>		
Pilot/Spring Return	20-150 (1.4-10.2)	30 (2)
Pilot/Spring Centered	20-150 (1.4-10.2)	35 (2.4)
Pilot/Pilot Return	20-150 (1.4-10.2)	15 (1)
Bleed/Spring Return	20-150 (1.4-10.2)	
Bleed/Bleed	20-150 (1.4-10.2)	



Hand Lever



Palm Button



Pedal



Treadle



Cam Stem



Roller Cam



Solenoids



Pilot



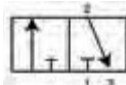
Bleed

# E Series

## Ordering

Position	1	2	3	4	5		6		7
Example:	<b>E</b>	X	X	2	XX	-	XXX	-	X

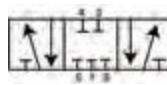
Position 1 Body Style	Position 2 Valve Type	Position 3 Body Style	Position 4 Port Size	Position 5 Actuation/Return*	Position 6 Coil Voltage	Position 7 Current Type
<b>E</b> E Series	<b>1</b> 2 Position Detent <b>2</b> 2 Position <b>3</b> 3 Position Spring Centered <b>5</b> 3 Position Detent (3 & 5, all ports blocked) <b>6</b> 3 Position Detent (inlet ports blocked, cylinder ports open) <b>7</b> 3 Position Spring Centered (6 & 7, inlet ports blocked, cylinder ports open)	<b>1</b> 4 Way Side Ported <b>4*</b> 4 Way Bottom Ported <b>5</b> 3 Way Side Ported *Solenoid and Pilot Models only.	<b>2</b> 1/4" NPT	<b>BD</b> Bleed Double <b>BS</b> Bleed/Spring <b>CS</b> Cam Stem/Spring <b>US</b> Cam Stem/Spring, 1/4" Spool travel, 3-way valve only. <b>RS</b> Roller Cam/Spring <b>HM</b> Palm/Manual <b>HP</b> Palm/Pilot <b>HS</b> Palm/Spring <b>WM</b> Palm w/o Button/Manual <b>WP</b> Palm w/o Button/Pilot <b>WS</b> Palm w/o Button/Spring <b>LM</b> Hand Lever/Manual <b>LP</b> Hand Lever/Pilot <b>LS</b> Hand Lever/Spring <b>PD</b> Pilot/Double <b>PS</b> Pilot/Spring <b>SN</b> Solenoid/Spring-N.O. <b>SS</b> Solenoid/Spring <b>FP</b> Pedal/Pilot <b>FS</b> Pedal/Spring <b>TM</b> Treadle/Manual <b>TS</b> Treadle/Spring *Numbering ends here if a non-solenoid valves being selected.	<b>000</b> No coil <b>024</b> 24V AC/DC <b>120</b> 120V AC <b>012</b> 12V AC/DC <b>240</b> 240V AC Required only when ordering Solenoid Valves.	<b>A</b> AC <b>D</b> DC <b>N</b> No Coil Required only on Solenoid Valves If coil option A, D or L is selected, a coil connector must be ordered. See Pg. 69 for coil & connector information.



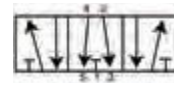
3-Way



4-Way, 2-Position



4-Way, 3-Position all ports blocked



4-Way, 3-Position inlet ports blocked, cylinder ports open



4-Way, 2-Position Bleed Valve

## Accessories

### Palm Buttons

For use with WM, WP or WS Actuators.

- 13111** Plastic, Black
- 119243** Metal, Plain
- 119244** Metal, Red
- 119245** Metal, Green
- MP3651-7** Plastic, Red

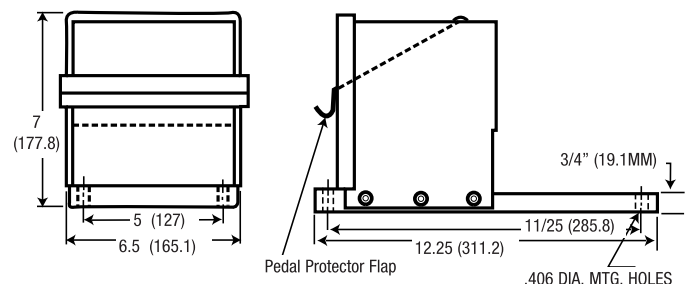


20965-1

### Foot Pedal Guards

Recommended for applications where accidental actuation may result in damage or injury. Model 20965-1 is designed to comply with ANSI No. B11.1-1971 specifications and OSHA regulations.

- 20965-1** Pedal Guard with Flapper
- 20965-2** Pedal Guard without Flapper

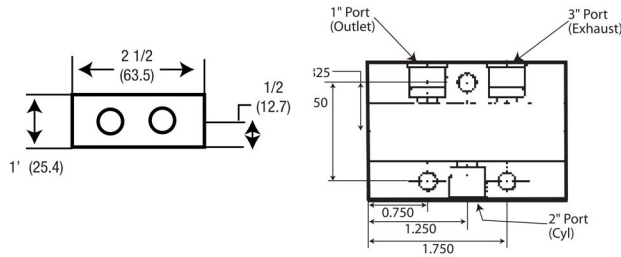


NOTE: Not for use with treadle actuator

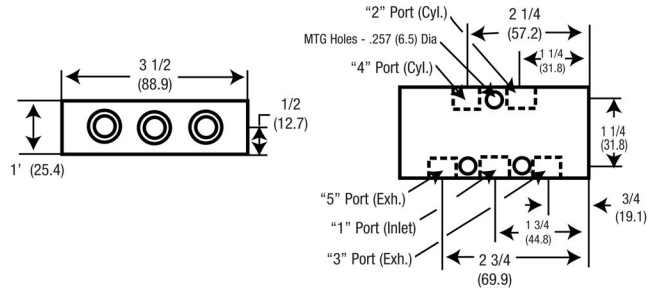
# E Series

► **Dimensions** Dimensions given in Inches and (Millimeters)

## Basic 3-Way Valve

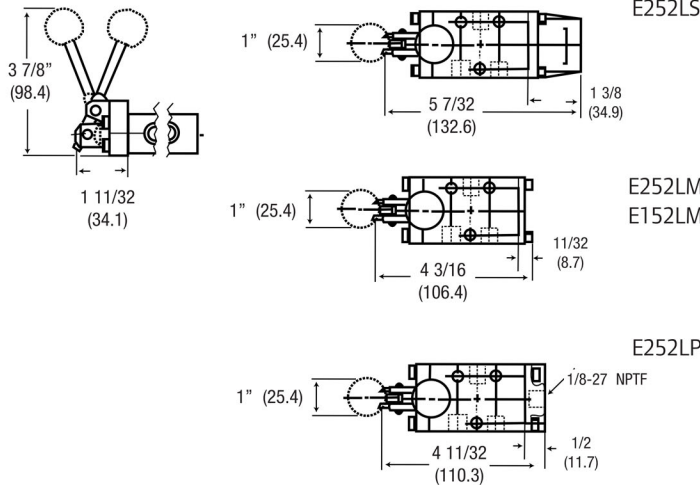


## Basic 4-Way Valve

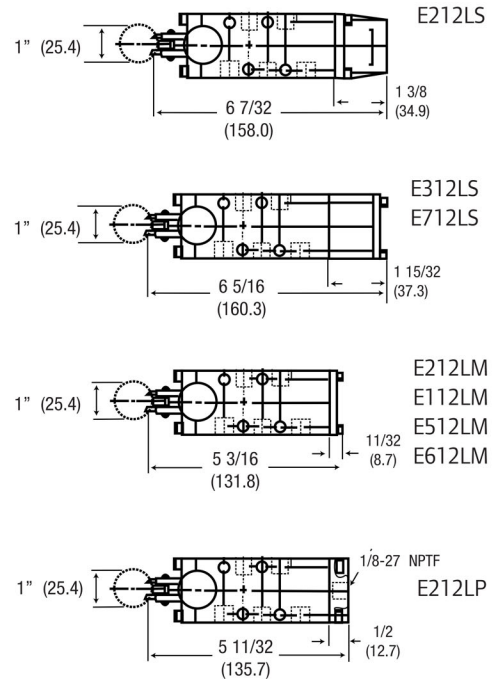


## Hand Lever Valves

### 3 Way Valves

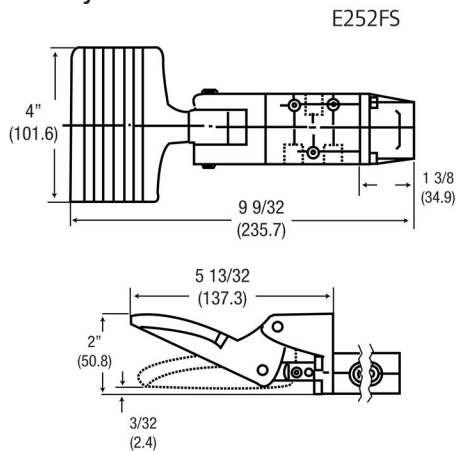


### 4 Way Valves

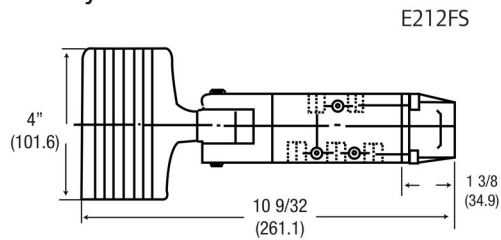


## Pedal

### 3 Way Valves

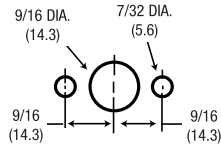
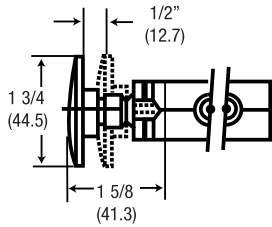


### 4 Way Valves



# E Series

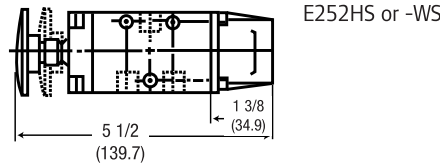
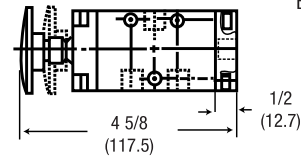
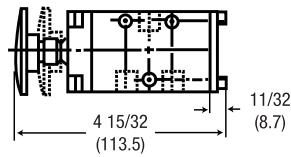
## Palm Button Valves



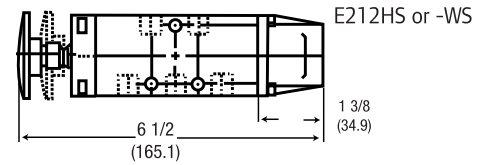
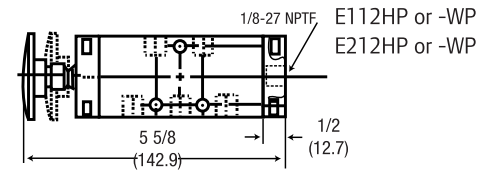
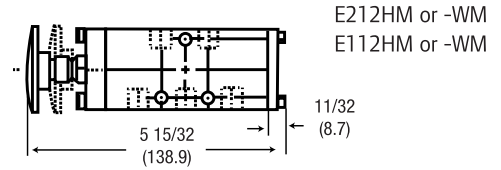
Palm Button Valves may be panel mounted. 1/8" Max. panel thickness utilizing two 10-24 UNC tapped holes in end cap

**Not Available on detent models:**  
 E152HM or -WM  
 E112HM or -WM

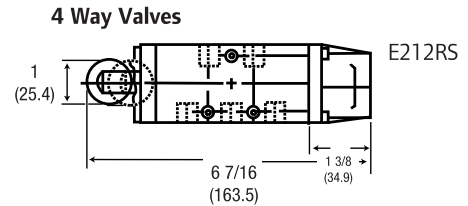
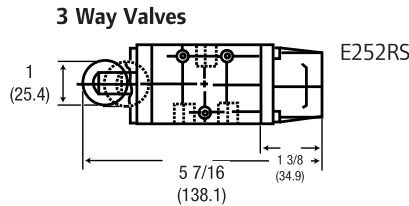
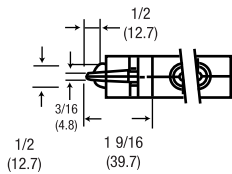
### 3 Way Valves



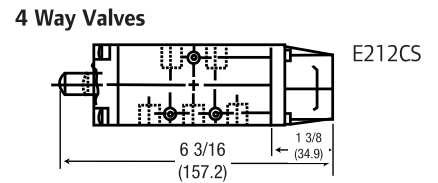
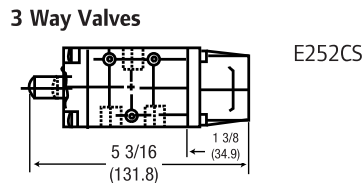
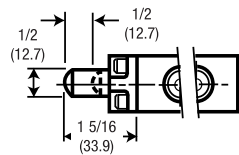
### 4 Way Valves



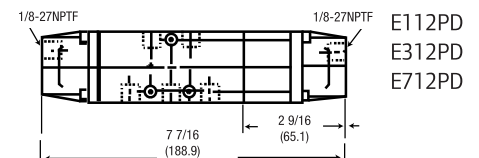
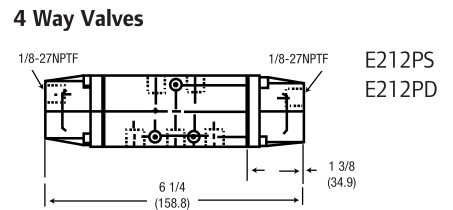
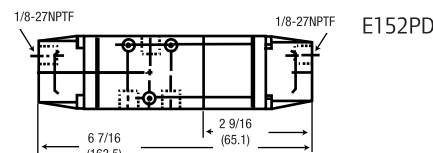
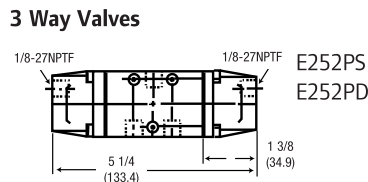
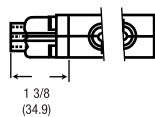
## Roller Cam Valves



## Cam Stem Valves



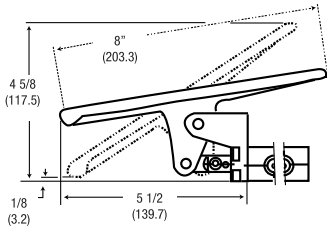
## Pilot Valves



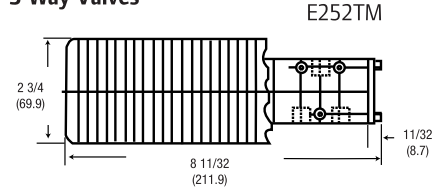
# E Series

Dimensions Dimensions given in Inches and (Millimeters)

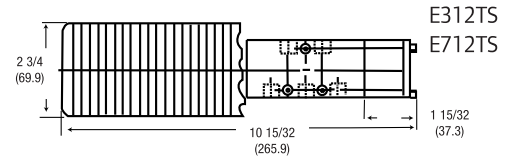
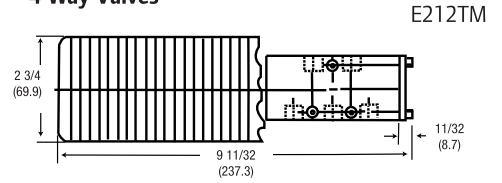
## Treadle Valves



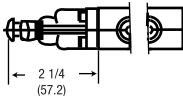
### 3 Way Valves



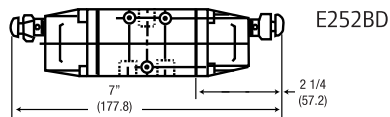
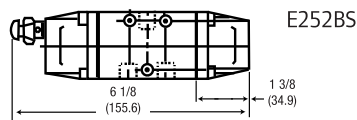
### 4 Way Valves



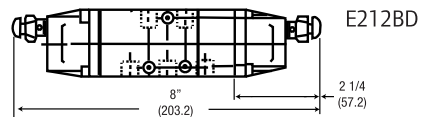
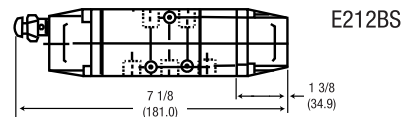
## Bleed Valves



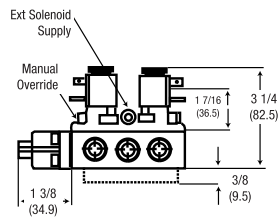
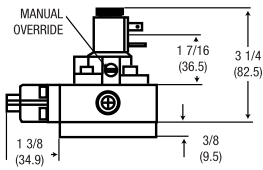
### 3 Way Valves



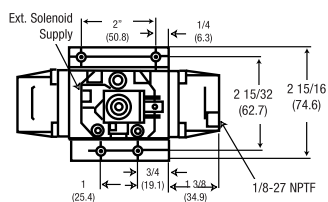
### 4 Way Valves



## Solenoid Valves

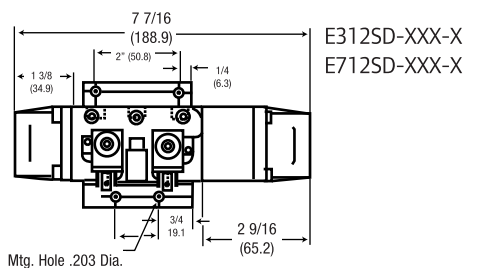
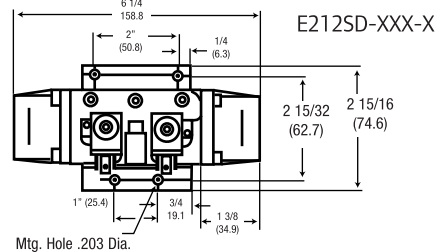
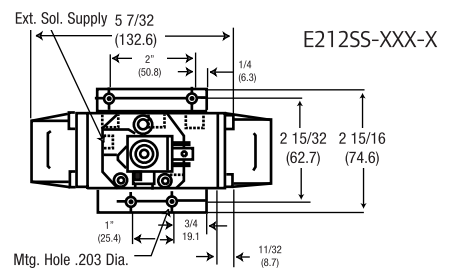


### 3 Way Valves



E252SN-XXX-X  
E252SS-XXX-X

### 4 Way Valves



# E Series

## Accessories

### 116153 Plug Kit

Kit needed for low pressure applications requiring an external Solenoid Supply Pressure. To use, remove and discard the standard pipe plug in the solenoid base. Thread the Plug/O-ring assembly into the threaded port. This blocks the internal supply connection. Finish by connecting an external air supply to the 1/8 NPTF port.

